

# Veterans Information Bulletin



<b>180 HP -</b>	20 hours dual flight training @ \$165=	\$3,300.00
<b>180 HP RG -</b>	35 hours dual flight training @ \$180=	\$6,300.00
<b>DUAL</b>	<b>55 hours</b>	
<b>180 HP RG -</b>	2 hours solo flight training @ \$136=	\$272.00
<b>SOLO/PIC</b>	2 hours	
<b>TOTAL</b>	57 hours	
	35 hours ground training and	
	Pre & post briefing @ \$44=	\$ 1,540.00
	<b>TOTAL CHARGES=</b>	<b>\$11,412.00</b>

(Example: VA reimbursement: \$11,412\* 60%= \$6,847.20)

**7. Additional cost NOT reimbursable by VA includes:**

Books	\$330
Supplies	\$100
Equipment	\$ 75

**8. Personal Equipment:**

Textbooks, course manuals, computers, plotters and charts are considered personal equipment and are not included in the above. Cost of these items will vary depending on the type selected. Hourly rates shown are the maximum rates for the most costly aircraft in the horsepower category. Other less expensive aircraft may be used and charges will be at the rate applicable for the specific aircraft used.

**A-Cent Aviation, Inc.**

1947 Aviation Way

Colorado Springs, CO 80916

719-573-2236

Fax: 719-574-7736

1 January 2009

Volume 1, Issue 3

Effective thru 31 December 2009

WE TEACH PEOPLE TO FLY

## Table of Contents

Ownership and Directors .....	3
Flight School Staff.....	3
Air Agency Certificate .....	3
School Calendar .....	3
Training Facilities and Equipment .....	4
Class Dates .....	5
Attendance Policy.....	6
Student Conduct .....	6
Standards of Progress .....	7
Grades .....	7
Probation.....	7
Reinstatement.....	8
Refunds.....	8
Veterans Administrations Reimbursement .....	8
Reimbursable Cost .....	8
Simulator Training.....	9
Medical Certification .....	9
Instrument Rating-Airplane .....	9
COMMERCIAL PILOT CERTIFICATE-Airplane SEL .....	11
COMMERCIAL PILOT CERTIFICATE-Airplane MEL Add-on .....	12
Additional Instrument Rating-Airplane .....	13
<b>ADDITIONAL CATEGORY COMMERCIAL PILOT CERTIFICATE-Airplane SEL .....</b>	<b>15</b>

(Example: VA reimbursement: \$5,960\* 60%= \$3,576)

### 5. Additional cost NOT reimbursable by VA includes:

Books	\$330
Supplies	\$100
Equipment	\$ 75

### 6. Personal Equipment:

Textbooks, course manuals, computers, plotters and charts are considered personal equipment and are not included in the above. Cost of these items will vary depending on the type selected. Hour rate shown is the maximum rate for the most costly aircraft in the horsepower category. Other less expensive aircraft may be used and charges will be at the rate applicable for the specific aircraft used.

## ADDITIONAL CATEGORY COMMERCIAL PILOT CERTIFICATE-Airplane SEL

### 5. Entrance Requirements:

Hold a **current** Class II medical certificate and at least a Commercial pilot license with Instrument rating or be concurrently enrolled in the Instrument rating course. Demonstrated ability to read, speak, and understand the English language.

### 6. Authorized Aircraft and hourly rates:

This course is comprised of 55 hours of flight (55 hours dual and 2 hours PIC) and 35 hours of ground instruction. The flight hours listed below show the breakdown according to aircraft type.

	<u>180 HP</u>	<u>180HP RG</u>
Dual	\$165	\$180
Solo	\$121	\$136

	<u>180 HP</u>	<u>180HP NAV III</u>	<u>180HP RG</u>
Dual	\$165	\$199	\$180
Solo	\$121	\$155	\$136
180 HP			
	15 hours dual flight training @\$165=		\$2,475
	2 hours solo @\$121		\$ 242
	20 hours ground training and pre/post @\$44=		\$ 880
	<b>TOTAL CHARGES=</b>		<b>\$3,597</b>

(Example: VA reimbursement: \$3,597 x 60%= \$2,158.20)

180 HP NAV III			
	15 hours dual flight training @\$199=		\$2,985
	2 hours solo @\$155		\$ 310
	20 hours ground training and pre/post @\$44=		\$ 880
	<b>TOTAL CHARGES=</b>		<b>\$4,175</b>

(Example: VA reimbursement: \$4,175 x 60%= \$2,505)

180 HP RG			
	15 hours dual flight training @\$180=		\$2,700
	2 hours solo @\$136		\$ 272
	20 hours ground training and pre/post @\$44=		\$ 880
	<b>TOTAL CHARGES=</b>		<b>\$3,852</b>

(Example: VA reimbursement: \$3,852 x 60%= \$2,311.20)

<u>Cessna 310 Q</u>			
Dual	\$304		
Solo	\$260		
180 HP			
	15 hours dual flight training @ \$304=		\$4,560.00
	2 hours Flight for Check ride @ \$260=		\$520.00
	20 hours ground training and Pre & post briefing @ \$44=		\$880.00
	<b>TOTAL CHARGES =</b>		<b>\$5,960.00</b>

## Ownership and Directors

A-Cent Aviation Inc. is a privately owned Corporation with all shares held equally by Mike Hogan, President, Alice Hogan, Secretary-Treasurer and Kimberly Skinner, CFO.

## Flight School Staff

Mike Hogan, Chief Flight Instructor

Alice Hogan, Pilot Shop Manager

Kimberly Skinner, CFO

John Claire-Panton, Flight Instructor

Lee Taylor, Flight Instructor

Michael Phillips, Flight Instructor

Dennis Dalton, Flight Instructor

## Air Agency Certificate

A-cent Aviation's air agency certificate number is 904S941K.

## School Calendar

The school office is open from 8am to 5pm Tuesday thru Saturday. After hour appointments are available with prior coordination. The school will be closed on the following dates.

Thursday, 1 January, 2009

Monday, 25 May, 2009

Saturday, 4 July, 2009

Monday, 7 September, 2009

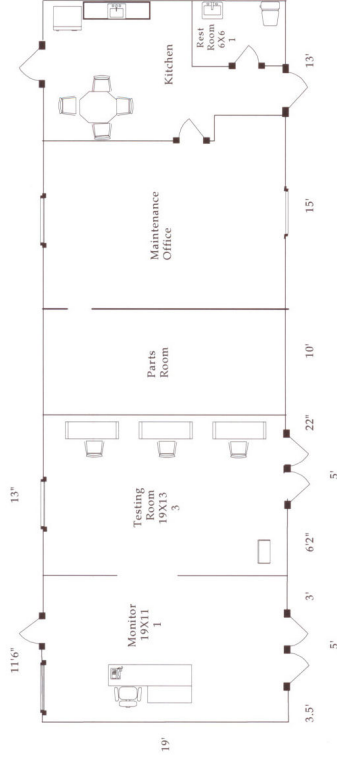
Thursday, 26 November, 2009

Friday, 25 December, 2009

## Training Facilities and Equipment

A-Cent's offices and classrooms are located in a 11,970 sq. ft. building. The interior is broken down into offices, pilot shop/dispatch, testing, instructor's area, classroom, parts room and maintenance hangar.

A-Cent Aviation, Inc.  
1947 Aviation Way  
Colorado Springs, CO 80916



### 3. Additional cost NOT reimbursable by VA includes:

Books	\$330
Supplies	\$100
Equipment	\$ 75

### 4. Personal Equipment:

Textbooks, course manuals, computers, plotters and charts are considered personal equipment and are not included in the above. Cost of these items will vary depending on the type selected. Hourly rates shown are the maximum rates for the most costly aircraft in the horsepower category. Other less expensive aircraft may be used and charges will be at the rate applicable for the specific aircraft used

## Additional Instrument Rating – Airplane

### 1. Entrance requirements:

Hold a current Class II medical certificate and at least a private pilot license and be concurrently enrolled in the Additional Category Commercial Pilot course.

**NOTE:** By statute (38 U.S.C. 3452), an individual receiving VA educational assistance must be pursuing a vocational, educational, or professional objective. If the instrument rating course were allowed to be taken first, there would be no assurance that it was taken for purposes of reaching a vocational, educational, or professional objective. Instead, it could be taken merely to add a rating to a private pilot certificate, which is not considered evidence of such an objective. By requiring that both courses be taken simultaneously, VA is helping to ensure that a student has made a commitment and is using his or her benefits to achieve a vocational objective.

This is the only instance where this procedure will be followed. This will allow payment of VA education benefits while complying with FAA requirements.

### 2. Authorized Aircraft and Hourly Rates:

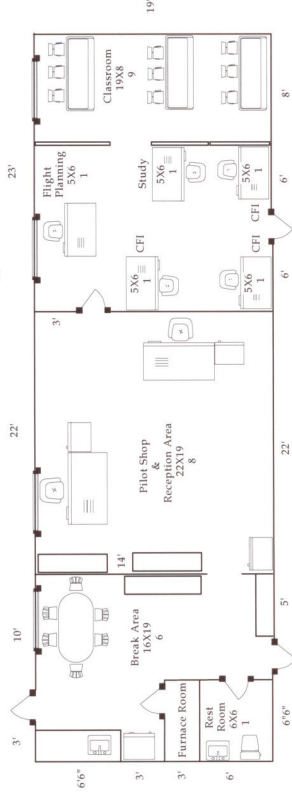
(Example: VA reimbursement: \$20,100\* 60%= \$12,060)

**3. Additional cost NOT reimbursable by VA includes:**

- Books \$330
- Supplies \$100
- Equipment \$ 75

**4. Personal Equipment:**

Textbooks, course manuals, computers, plotters and charts are considered personal equipment and are not included in the above. Cost of these items will vary depending on the type selected. Hourly rates shown are the maximum rates for the most costly aircraft in the horsepower category. Other less expensive aircraft may be used and charges will be at the rate applicable for the specific aircraft used.



**Aircraft Inventory**

<u>Make</u>	<u>Model</u>	<u>Horsepower</u>	<u>Leased</u>	<u>Owned</u>
Cessna	172N	180	1	1
Cessna	172S NAV III	180	1	
Cessna	172RG	180		1
Cessna	310Q	2 X 260	1	

**Class Dates**

A-Cent Aviation maintains an open enrollment for its classes. This provides our students with an unrestricted path in achieving their goals and is not bound by enrolment dates and class schedules; they may proceed at their own pace. The only time a VA beneficiary may receive benefits for a concurrent enrollment in vocational flight training is when the student is pursuing the commercial pilot certificate and instrument rating courses. Students must possess the appropriate ratings and/or certificates and must meet the medical requirements for the pilot certificate program they enroll in ( class 2 for commercial and class 1 for ATP). A veteran, service member, or reservist must be in pursuit of a vocational objective in aviation. VA

**COMMERCIAL PILOT CERTIFICATE–Airplane  
MEL Add-on**

**1. Entrance Requirements:**

Hole a **current** Class II medical certificate and at least a private pilot license with Instrument rating or be concurrently enrolled in the Instrument rating course. Demonstrated ability to read, speak, and understand the English language.

**2. Authorized Aircraft and hourly rates:**

<u>Cessna 310 Q</u>	
Dual	\$304
Solo	\$260
15 hours dual flight training @ \$304=	\$4,560.00
2 hours Flight for Check ride @ \$260=	\$520.00
35 hours ground training and Pre & post briefing @ \$44=	\$1,540.00
<b>TOTAL CHARGES</b>	<b>= \$6,620.00</b>

(Example: VA reimbursement: \$6,620\* 60%= \$3,972)

will not pay benefits for ancillary, vocational or recreational objectives.

### Attendance Policy

Students must have a minimum of 15 hours of ground and/or flight training in a 90 day period to have satisfactory attendance. Attendance records are maintained in A-Cent Aviation's database. Students who fail to complete the required 15 hours in 90 days will have a probationary period of 90 days to complete their requirements. Failure to complete the requirements at the end of the probation period is grounds for dismissal from the program.

### Student Conduct

The purpose of the Student Conduct Code is to maintain the general welfare of the school. The school strives to make the school a place of study and work where people are treated, and treat one another, with respect and courtesy. The school views the student conduct process as a learning experience that can result in growth and personal understanding of one's responsibilities and privileges within both the school community and the aviation community. All students must follow these standards. Students who violate these standards or the FAA Regulations will be subject to termination. These procedures are designed to provide fairness to all who are involved in the conduct process. All of the policies and procedures outlined in the A-Cent Aviation Operations Manual will be adhered to. Initial violations of the manual, violations of the Federal Aviation Regulations or unsafe practices/ actions will result in a 90 day probation or termination. Repeated violations in these areas will result in dismissal from the school.

### Credit for Previous Educational Training

Each student will be evaluated by the Chief Flight Instructor at enrollment to determine what credit can be given for previous training and FAA ratings he or she holds. Your flight logbooks and military flight records will be reviewed to determine what requirements have been met towards the FAA Certificate you enroll for. Any FAA written test that are presented and verified will be

Textbooks, course manuals, computers, plotters and charts are considered personal equipment and are not included in the above. Cost of these items will vary depending on the type selected. Hour rate shown is the maximum rate for the most costly aircraft in the horsepower category. Other less expensive aircraft may be used and charges will be at the rate applicable for the specific aircraft used.

## COMMERCIAL PILOT CERTIFICATE-Airplane

### SEL

#### 1. Entrance Requirements:

Hold a **current** Class II medical certificate and at least a private pilot license with instrument rating or be concurrently enrolled in the Instrument rating course. Demonstrated ability to read, speak, and understand the English language.

#### 2. Authorized Aircraft and hourly rates:

This course is comprised of 120 hours of flight (55 hours dual and 65 hours solo/PIC) and 35 hours of ground instruction. The flight hours listed below show the breakdown according to aircraft type.

Dual	<u>180 HP</u>	<u>180HP NAV III</u>	<u>180HP RG</u>
	\$165	\$199	\$180
Solo	\$121	\$155	\$136
<b>180 HP -</b>	10 hours dual flight training @ \$165= \$1,650.00		
<b>180 HP NAV III -</b>	10 hours dual flight training @ \$199= \$1,990.00		
<b>180 HP RG -</b>	35 hours dual flight training @ \$180= \$6,300.00		
<b>DUAL</b>	<b>55 hours</b>		
<b>180 HP -</b>	40 hours solo flight training @ \$121= \$4,840.00		
<b>180 HP NAV III -</b>	20 hours solo flight training @ \$155= \$3,100.00		
<b>180 HP RG -</b>	5 hours solo flight training @ \$136= \$680.00		
<b>SOLO/PIC</b>	<b>65 hours</b>		
<b>TOTAL</b>	<b>120 hours</b>		
	35 hours ground training and		
	Pre & post briefing @ \$44= \$1,540.00		
	<b>TOTAL CHARGES= \$20,100.00</b>		

	<u>180 HP</u>	<u>180HP NAV III</u>	<u>180HP RG</u>
Dual	\$165	\$199	\$180
Solo	\$121	\$155	\$136

180 HP	35 hours dual flight training @\$165=	\$5,775
	2 hours solo @\$121	\$ 242
	30 hours ground training and pre/post @\$44=	\$1,320
	<u>TOTAL CHARGES=</u>	<u>\$7,337</u>
	(Example: VA reimbursement: \$7,337 x 60%= \$4,402.20)	

180 HP NAV III	35 hours dual flight training @\$199=	\$6,965
	2 hours solo @\$155	\$ 310
	30 hours ground training and pre/post @\$44=	\$1,320
	<u>TOTAL CHARGES=</u>	<u>\$8,595</u>
	(Example: VA reimbursement: \$8,595 x 60%= \$5,157)	

180 HP RG	35 hours dual flight training @\$180=	\$6,300
	2 hours solo @\$136	\$ 272
	30 hours ground training and pre/post @\$44=	\$1,320
	<u>TOTAL CHARGES=</u>	<u>\$7,892</u>
	(Example: VA reimbursement: \$7,892 x 60%= \$4,735.20)	

3. **Additional cost NOT reimbursable by VA includes:**

Books	\$330
Supplies	\$100
Equipment	\$ 75

4. **Personal Equipment:**

entered into the student records and credited towards the certificate. Previous course study will be evaluated by written test and credit will be issued for those areas that meet the FAA minimum standards.

## Standards of Progress

A students' progress is tracked by A-Cent's computer database. Satisfactory progress requires the completion of a minimum of 5 lab exercises and 5 flights, totaling a minimum of 15 hours, per 90 day period. The specific lab exercises and flights are defined in the syllabus for the program the student is enrolled in. In addition, the student must successfully pass the stage exams as defined by the syllabus for the program the student is enrolled in. Additional information on grades is available in the Grading Addendum.

## Grades

Our program is based on a satisfactory / unsatisfactory performance levels. Satisfactory completion of a lab requires 100% correct completion of all questions in the lab. Satisfactory completion of a flight requires the student maneuver the plane within the completion standards defined at the bottom of each flight lesson in their syllabus. Criteria for a successful pass of the stage exams is defined by the syllabus for the program the student is enrolled in is determined by the completion standards documented in the syllabus. Flight training is a process of developing hand eye coordination and judgment. Each lesson will narrow the completion standards toward the standards established by the FAA. These levels of proficiency are developed throughout the program and the final level is achieved by the time you take the check ride.

## Probation

Probationary periods are for 90 days. Probation is a period of time where the student will receive closer supervision to ensure the material is being studied and understood. Failure of students to progress for lack of attendance and effort are counseled and a remedial plan is established. If the student does not follow the remedial plan during the probation period they will be terminated. Students that are deployed will be placed in a holding status when

documentation is provided to the school and reinstated upon their return.

## **Reinstatement**

Reinstatement will be evaluated on a case by case basis by the chief flight instructor.

## **Refunds**

This school maintains a policy of refunding the unused portion of tuition, fees and other charges in the event the person withdraws or is terminated prior to completion of the course. After completion of an account audit prepaid funds will be refunded upon withdrawal or termination from a course of study less a \$10 holding fee. See Refund Policy Addendum for additional information.

## **Veterans Administrations Reimbursement**

The U.S. Department of Veterans Affairs will reimburse an eligible veteran, service member or reservist for dual and solo flight training, pre and post flight briefings, and ground school at the rate of 60%. The allowance is paid monthly by the VA to the student based upon actual training certified by the flight school as indicated on VA form 22-6553c, "Monthly Certification of Flight Training". The entitlement is charged based on the rate of one month for a benefit amount equal to the full-time institutional rate. No reimbursement is made for books, supplies, equipment or other charges.

## **Reimbursable Cost**

The Maximum reimbursable cost will be disclosed to you by The U.S. Department of Veteran Affairs, based on your eligibility. Specific aircraft rates are available in the course descriptions contained in this bulletin and prices may vary according to current fuel prices and aircraft availability.

## **Simulator Training**

For the purpose of VA certification and payment, simulator training is considered the same as flight training and will count toward the total number of dual and/or solo hours approved in a course.

## **Medical Certification**

Veterans, service members and reservist may receive educational benefits for flight training provided that the individual also meets the medical requirements of a commercial pilot's license. VA regulations require that in order to receive benefits for flight training, a student must hold a current class II medical certificate upon enrollment. If a student receives the proper medical certificate after the first day of a course, the Department of Veterans Affairs will deny benefits for the entire course.

## **Instrument Rating –Airplane**

### **1. Entrance requirements:**

Hold a current Class II medical certificate and at least a private pilot license and be concurrently enrolled in the Commercial Pilot course.

NOTE: By statute (38 U.S.C. 3452), an individual receiving VA educational assistance must be pursuing a vocational, educational, or professional objective. If the instrument rating course were allowed to be taken first, there would be no assurance that it was taken for purposes of reaching a vocational, educational, or professional objective. Instead, it could be taken merely to add a rating to a private pilot certificate, which is not considered evidence of such an objective. By requiring that both courses be taken simultaneously, VA is helping to ensure that a student has made a commitment and is using his or her benefits to achieve a vocational objective.

This is the only instance where this procedure will be followed. This will allow payment of VA education benefits while complying with FAA requirements.

### **2. Authorized Aircraft and Hourly Rates:**